



News Bulletin for Community and Voluntary Groups, Town and Parish Councils, Partners and Hub Update Subscribers

Community Support Hub Update from Dave Wraight, Hub Oversight



In recent weeks the Community Support Hub has been contacting all those in West Berkshire who have needed to self-isolate due to Covid. This includes people who have been instructed to self isolate by the NHS Test and Trace contact tracing system, and those who are quaranteeing after returning home from abroad.

Our calls are to offer support and address any of the challenges that the mandatory period of self-isolation may bring, whether that be on a practical level such as food shopping or caring responsibilities, through to the financial impact of not going to work.

We are connecting those who need self-isolation support to the community groups who are very well placed to provide such assistance. We are also advising how eligible residents can [apply for the £500 NHS Test and Trace support payment](#).

Thank you for your ongoing commitment to the residents and communities of West Berkshire; it is of immense value.

West Berkshire Council newsletters

Please can you kindly remind your community members and residents to sign up to receive our news direct to their inbox by visiting <https://info.westberks.gov.uk/article/37368/Newsletters> - especially as we are going to be winding down the Covid-19 News Bulletin this summer in line with restrictions being eased.

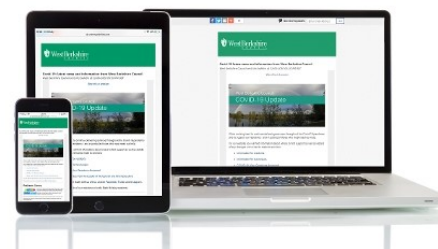
We've included links to recent newsletters below for your reference.

Covid-19 News – [21 May](#), [14 May](#), [8 May](#)

Residents' General News – [19 May](#), [12 May](#), [6 May](#)

West Berkshire Libraries – [May 2021](#)

Latest news announcements: <https://info.westberks.gov.uk/news>



In this edition

The following sections contain information and graphics to share with your communities:

- West Berkshire Community Testing updates
- Covid-19 Vaccine Updates from the NHS
- Government guidance updates
- Other news to share

West Berkshire Community Testing updates

Community Testing Update

Mobile Community Collect service – changes to timetable and some route stops from Monday, 24 May

You can pick up free Covid-19 home test kits (lateral flow testing) from West Berkshire Council's Mobile Community Collect service at designated locations across the district at the same time each week. There will be some changes to route stops and timeslots from Monday, 24 May. [See updated timetable.](#)

New community testing site for Newbury from Thursday, 27 May

The Highwood Copse Primary School Testing Site in Newbury will close permanently on Tuesday, 25 May, and be replaced by a mobile community testing site that will open at Newbury Library Car Park (Wharf) from Thursday 27 May. Residents can either have a lateral flow device test or collect lateral flow home testing kits from this new mobile testing site. There will be no appointment system, and the site will operate on Monday, Tuesday, Thursday, Friday and Saturday (closed on Wednesdays and Sundays).

Covid-19 Vaccine updates from the NHS

Covid-19 Vaccination Update

Most vulnerable groups to get second Covid-19 vaccine earlier

People in the top nine priority groups who haven't had their second dose Covid-19 vaccine will now have their appointments brought forward from 12 to 8 weeks. This action has been taken to ensure that people receive the strongest possible protection from the virus at the earliest opportunity. [Read more information.](#)

People should stick to their second dose appointments and they do not have to contact the NHS. The NHS will let people know if their appointment is being brought forward. Those under 50 years of age will continue to get their first dose as planned, with their second dose at 12 weeks.

People aged 34 or over called up for Covid-19 vaccine

Anyone aged 34+, or who will reach 34 before 1 July 2021, can go ahead and [book their Covid-19 vaccine appointment.](#)

Government guidance updates

Below are links to new or recently updated guidance to reflect Step 3 of the Government's Roadmap to Recovery:

- [Download Step 3 poster](#) displaying information about Covid-19 restrictions in England from 17 May.
- [Covid-19: Guidance for the safe use of multi-purpose community facilities](#) –for managing community centres, village halls and other community facilities on safely re-opening multi-purpose buildings.
- [Protective measures for holiday or after-school clubs and other out-of-school settings for children during the coronavirus \(Covid-19\) outbreak](#) Guidance for providers of community activities, holiday or after-school clubs, tuition and other out-of-school settings offering provision to children during the coronavirus (Covid-19) outbreak.
- [Covid-19: Guidance for managing playgrounds and outdoor gyms](#) Guidance for owners and operators of playgrounds and outdoor gyms to enable their use while minimising the transmission risk of coronavirus (Covid-19).



- [Guidance for parents and carers of children attending out-of-school settings during the coronavirus \(Covid-19\) outbreak](#) Guidance for parents and carers of children attending community activities, holiday or after-school clubs, tuition and other out-of-school settings.
- [Covid-19: ventilation of indoor spaces to stop the spread of coronavirus](#) Guidance on the ventilation of indoor spaces to stop the spread of coronavirus (Covid-19).
- [Coronavirus \(Covid-19\): getting tested](#) Guidance on coronavirus (Covid-19) testing, including who is eligible for a test and how to get tested.
- [Covid-19: guidance on supporting children and young people's mental health and wellbeing](#) Advice for parents and carers on looking after the mental health and wellbeing of children or young people during the coronavirus (Covid-19) outbreak.
- [Covid-19: guidance for households with possible coronavirus infection](#) Stay at home guidance for households with possible coronavirus (Covid-19) infection.
- [Covid-19: guidance for the public on mental health and wellbeing](#) Advice and information on how to look after your mental health and wellbeing during the coronavirus (Covid-19) outbreak.
- [Covid-19 vaccination: women of childbearing age, currently pregnant or breastfeeding](#) Information for all women of childbearing age, those currently pregnant or breastfeeding/
 - [Covid-19 vaccination: a guide for all women of childbearing age, pregnant or breastfeeding](#)
- [Coronavirus \(Covid-19\): jobs that qualify for travel exemptions](#) from quarantine, passenger locator form or Covid testing requirements.
- [Demonstrating your Covid-19 vaccination status when travelling abroad](#) How to show that you have had a full course (two doses) of the Covid-19 vaccine and access this status when travelling abroad.
- [Booking and staying in a quarantine hotel if you've been in a red list country](#) How to book a quarantine hotel and coronavirus (Covid-19) tests if you've been in a red list country in the 10 days before you arrive in England.

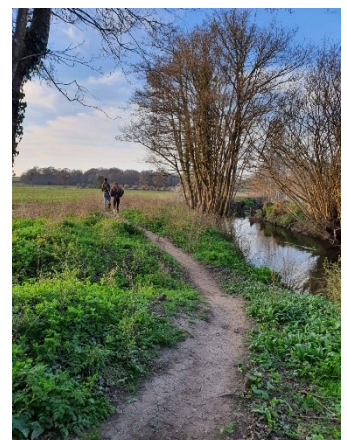
Further information to share with your communities

How can Public Rights of Way in West Berkshire be improved?

Considering how important nature and the outdoors are to our mental health and well-being, it's vital that we ensure our Public Rights of Way are accessible and well-maintained.

West Berkshire Council is seeking the views of the public on what matters most to them for the Public Rights of Way in our district. The Council would like know about everyone's experiences of using our Public Rights of Way. They also keen to learn if there were any problems using the rights of way and whether any concerns about this were addressed.

Find out more and take survey: <https://www.surveymonkey.co.uk/r/wbrowip>



West Berkshire Mental Health Fund encourages applications

Applications are welcomed for the West Berkshire mental health fund 'Surviving to Thriving' from groups of any size who are planning to deliver activities or projects that will improve the mental health and wellbeing of residents impacted by Covid-19.



Grants awarded to date from the mental health fund, a collaboration between West Berkshire Council and Greenham Trust, include:

- £3,843.74 to West Berkshire Dementia Action Alliance for the "My Speakerfriend" project reaching isolated and vulnerable people with dementia
- £1,848 to Hungerford Primary School for yoga/mindfulness sessions for key year groups
- £2,000 to Newbury Family Counselling Service for additional staffing costs
- £8,112 to Dingley's Promise for 1:1 specialist support for families with children with disabilities

To find out more and apply via The Good Exchange, please visit: <https://greenhamtrust.com/surviving-to-thriving-west-berks-Covid-19-mental-health-fund/>

Community Education Fund applications open until 7 June

The Community Education Fund provides funding for projects or courses that focus on widening participation in education for adults aged 19+ and families living in West Berkshire. A variety of projects are fundable, ranging from employability to skills training to health and wellbeing, and they can range from a single day to weeks in length.



Education & Skills
Funding Agency



Any organisation that provides education and training opportunities can bid for funding for their proposal, up to a maximum of £10,000. This includes colleges, training companies, voluntary organisations, charities, housing associations, community groups, schools and nurseries.

West Berkshire Council is accepting applications for funding until 5pm on Monday 7 June 2021. To learn more and make an application please visit: [Community Education Fund](#). You'll find links to the bid form and further guidance at the bottom of this page.

Free job-seeker support course from Educafe for non-native speakers



The Educafe Job Support Club is offering a free, six week course for non-native speakers looking to start or return to work, or volunteer in West Berkshire. The sessions will include work skills workshops and language support for job hunting, writing CVs and practicing interviews.

The sessions will run from 10.00 am - 1.00 pm every Friday from 11 June to 16 July at Newbury Town Hall.

For further details, please click on the links below. If you know of anyone who might be interested in taking this course, please kindly forward them this information.

Download leaflet: <https://bit.ly/3h1Vi9y>

Register interest: <https://bit.ly/340APoB>

Take Part in Educafe's Community Survey

Educafe – the new diverse ethnic communities support agency for West Berkshire – has developed a short online survey to find out more about the things that matter to you and your family. If you haven't responded yet, please your say by completing the survey here:

[https://form.jotform.com/EDUCAFE/ COMMUNITY SURVEY](https://form.jotform.com/EDUCAFE/COMMUNITY_SURVEY)



Help Make Berkshire's Roads Safer



Royal Berkshire Fire and Rescue Service (RBFRS) is reminding people to take care on the roads. You can help to make Berkshire's roads safer by following their top tips. These tips include giving yourself time to react and making sure there is enough space between you and the vehicle in front.

BLUE LIGHT AWARE

RBFRS is also asking people to be aware of emergency vehicles on the roads. If you hear sirens and see blue lights, do not panic or speed up; look for somewhere safe to pull over. If you're at a traffic light, stay where you are and do not go through a red light.

On a motorway and dual carriageway, pull over to the left to allow an emergency vehicle to pass in the outside lane. If traffic is slowing or stationary and there is no lane available, the vehicle's position will let you know whether to move right or left.

When you park up, always leave enough room for emergency vehicles to get through. For more advice on emergency vehicle access, visit the [RBFRS website](#).

Project to Build Theale Community Fire Station

During the winter and spring, good progress has been made on the project to build a new community fire station in Theale. Progress on the outside of the building includes the fitting of external panels and iconic appliance bay doors. Inside the building, the staircases have been fitted and the interior plastering and decoration are well underway. The electrical and mechanical installation is continuing with the ventilation and air conditioning has already been installed.

In the coming weeks, fixtures and fittings will start to go in, including the kitchen areas as the project moves ever closer to providing a modern, fit-for-purpose facility for fire and rescue service staff, partners, and the wider community.



Royal Berkshire Fire and Rescue Service (RBFRS) firefighters and Thames Valley Police's Neighbourhood Policing Team will be based on site, together with staff from South Central Ambulance Service who will be able to use the station's facilities when on standby. The new station is expected to be fully operational across all three blue light partners by spring 2022, when it is hoped that local residents will be able to visit the new station to see it for themselves.

The new station will also boast a community room, providing a flexible, fully accessible meeting space for local residents and community groups to use. To find out more, please visit <https://www.rbfrs.co.uk/theale-community-fire-station/>.